

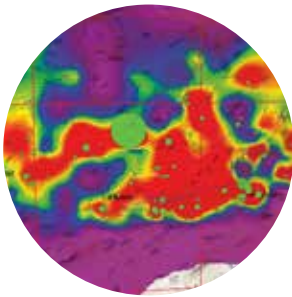


IHS Markit™

# PETRA®

Integrated Software and Delivery  
Tools to Advance your E&P Workflow

# Streamline interpretation, optimize play analysis, and make confident decisions using Petra



## Geologist

- Identify area of interest
- Integrate well, log and seismic information
- Target drilling and recompletions

## Drilling Engineer

- Derive surface and profile plans
- Analyze planned borehole paths
- Perform cost estimates and analysis

## Reservoir Engineer

- Identify recompletion & drilling opportunities
- Optimize production and recovery
- Analyze reservoir trends

## Completion Engineer

- Model completion performance
- Provide technical specifications and operating instructions
- Optimize completion & workover designs and operations

## Production Engineer

- Evaluate separation of produced fluids
- Monitor downhole flow control
- Maximize profitability

## Technologist

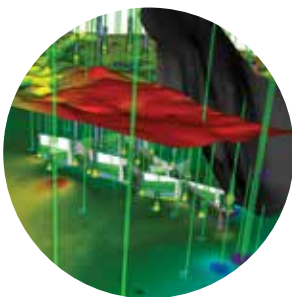
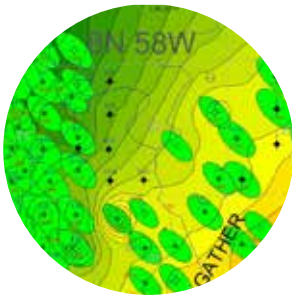
- Load information
- Verify and quality check information
- Collaborate on project development

## Petrophysicist

- Understand reservoir properties
- Perform well, core & log analysis
- Build reservoir models
- Evaluate reservoir models

## Manager

- Assess strategy
- Manage risk
- Ensure compliance



# From to completion, energy critical information and analytical tools you can count on

Petra is a unique solution for data management, manipulation, visualization and integration of geological, geophysical and engineering data. You can quickly visualize results using mapping, cross-sections, seismic interpretations, log plots, cross-plots, production and reservoir analysis and 3D visualization.

Petra also features direct links to the following applications.

- Kingdom®
- AccuMap®
- Energy Web Services  
(U.S. Well & Production database,  
International Well database)
- GeoSyn™
- Information Hub™
- LOGarc™
- PowerTools®
- Enerdeq® Browser

# Build your Petra project using IHS Markit's critical information

## Well Data

- Access a database of more than 4.5 million current and historic well records easily via Petra and other applications, including exclusive data not available through other agencies
- Rely on continuously updated information including well header, formation tops, logs run, completions, production tests and more to ensure the highest level of currency IHS Raster & Digital Well Log Data

## Raster & Digital Well Log Data

- Access extensive log information, including over 3.1 million depth-registered raster images, close to 300,000 digital logs and over 13 million curve feet per month added through digitizing
- Accuracy is verified at each step of the loading process, ensuring compliance to API and LAS standards by comparing digital logs to raster well logs of hard copies

## Production Data

- Access and integrate production information with Well Data within days of receipt from the source regulatory authorities to ensure the highest level of currency
- Obtain production figures for all fluids, operation hours, injection records, ratios and cumulative values

---

## Directional Surveys

- Use IHS Directional Surveys to determine potential productivity, pressure, permeability and extent of oil or gas reservoirs or formations in open well bores
- Understand the wellbore path from surface to reservoir, particularly for unconventional plays and when using interpretation software such as Petra

## Interpreted Formation Tops

- Use to map gross geologic structures within a consistent stratigraphic framework for an entire basin
- Increase your knowledge of depositional environments
- Validate new and existing prospects against an unbiased dataset and in a regional context

Challenge	Solution	Related Tools
How do I effectively and efficiently analyze and manage vast amounts of information and build accurate models?	Petra's direct connection to IHS Markit's information enables you to download multiple sources of the information for immediate use in Petra and other applications. It also ensures that you have the most up-to-date information available. Within Petra, utilize the Map, Log Correlation, Cross Section and 3D Visualization Modules and more to model and analyze your area(s) of interest.	<ul style="list-style-type: none"> <li>- <a href="#">Well &amp; Production Data</a></li> <li>- <a href="#">Well Log Data</a></li> <li>- <a href="#">Drill Stem Tests</a></li> <li>- <a href="#">AccuMap</a></li> <li>- <a href="#">Enerdeq Browser</a></li> <li>- <a href="#">LOGarc</a></li> </ul>
How can I develop a short list of "hot" areas and develop prospects and operating strategies?	Identify top producing areas and production thresholds in your area of interest with Well and Production information from IHS Markit. Then, use Petra's Decline Analysis functionality and the new Directional Well Module to study stimulation strategies.	<ul style="list-style-type: none"> <li>- <a href="#">FieldDIRECT®</a></li> <li>- <a href="#">PowerTools</a></li> </ul>
How can I plan for the future production and depletion of my reservoirs?	Analyze trends, devise depletion strategies and manage reservoirs using Petra's Group Production Plot and Decline Curve Analysis modules. Calculate hydrocarbon recoveries based on established industry models using Petra's Advanced Volumetrics module.	<ul style="list-style-type: none"> <li>- <a href="#">FieldDIRECT</a></li> <li>- <a href="#">PowerTools</a></li> <li>- <a href="#">Well &amp; Production Data</a></li> <li>- <a href="#">Well Log Data</a></li> <li>- <a href="#">Interpreted Formation Tops</a></li> </ul>
How do I quickly evaluate a prospect?	Estimate future declines, determine reservoir pressure, and map ultimate recoverable gas, cumulative gas and gas decline rates using Petra's Decline Analysis, Volumetrics and Map modules. Create a template for wells in an evaluation area that share common analysis needs, speeding up the evaluation process for multiple leases.	<ul style="list-style-type: none"> <li>- <a href="#">PowerTools</a></li> <li>- <a href="#">Well &amp; Production Data</a></li> <li>- <a href="#">AccuMap</a></li> <li>- <a href="#">Enerdeq Browser</a></li> </ul>
I need to benchmark production for tight gas sand reservoirs and see what kinds of treatment plans have enhanced production.	Characterize production performance of key reservoirs as benchmarks. Evaluate specific well performance after treatment types.	<ul style="list-style-type: none"> <li>- <a href="#">PowerTools</a></li> <li>- <a href="#">Well &amp; Production Data</a></li> <li>- <a href="#">IHS PERFORM®</a></li> </ul>

# Petra Modules

## Petra 3D Visualization Module

Display geological information in 3D for analysis, well planning and presentation.

Petra's integrated 3D Visualization Module is designed to give geologists, engineers, technologists and geophysicists the ability to produce a complete three dimensional view of their Petra projects.

## Petra Advanced Volumetrics Module

Quickly perform volumetric and fluid recovery calculations for both oil and gas reservoirs.

Petra's Advanced Volumetrics Module provides you with both deterministic and probabilistic methods to calculate hydrocarbon recoveries based on well-established industry correlations and models.

With Petra, you can quickly perform volumetric computations and calculate recovery efficiencies using deterministic and probabilistic models. Deterministic models are based on average reservoir and fluid properties, while probabilistic reserves are calculated using Monte Carlo simulation, which outputs statistical reports and probability graphs based on various distributions of reservoir parameters.

## Petra Cross Section Module

Display and analyze your data graphically.

Petra's integrated Cross Section Module provides the base for producing easily customizable cross section displays, in addition to rapid editing of data and production of stunning graphical outputs.

## Petra Directional Well Module

New Functionality to Plan, Analyze and Display Horizontal & Directional Wells.

Petra's integrated Directional Well Module provides a new interface to improve your horizontal and directional drilling workflows. With Petra, you can:

- Enhance gridded surfaces with repeated tops along horizontal wellbores
- Quickly plan wells and load drilling data
- Analyze horizontal well performance and post results
- and much more

## Petra Log Correlation Module

Pick tops across new areas with unprecedented speed.

Petra's integrated Log Correlation Module is designed to increase the speed and ease with which you pick tops across a basin or play.

## Petra Map Module

Display and analyze your data graphically.

Petra's integrated Map Module provides the base for producing easily customizable map displays and allows you to quickly edit data and create cross sections. With Petra, you can easily load, edit and display cartographic data, including grid and culture information, to assist in reservoir analysis and location picking.

## Petra Production Group Plot Module

Display and analyze historical and average production data for any set of wells.

Petra's integrated Production Group Plot Module allows you to analyze trends, devise depletion strategies and manage reservoirs. Its simple interface makes it easy to display monthly production data for a set of wells, including summing, averaging, or time-normalizing production data.

## Petra Sidekick

Petra Sidekick is an external tool that provides users with a rapid and intuitive way to access their Petra project, allowing users to analyze project data in a multi-well view, import and export data into a Petra project, and perform various database maintenance functions.

- Multi-well or single-well data view
- Show well statistics by scanning wells
- Data supported includes project, well, zone, tops, raster, grid, overlay and table data
- Maintenance tools for your Petra project include global data delete, and zone, production, raster log, and digital log maintenance
- Import data through general ASCII files; batch import LAS digital log files and IHS Markit raster log LIC files; import IHS Markit digital and raster logs through Direct Connect
- Export data through a tabular ASCII file

## AccuMap

AccuMap provides desktop access to numerous up-to-date databases, including land, well, pressure, production, pipelines, core, reserves and logs for the Western Canadian Sedimentary Basin and Frontier areas, as well as Montana, North Dakota and Wyoming. Information from AccuMap can be exported directly into Petra to perform in-depth analysis of well-centric data. (Canada & U.S.)

# Enhance your integrated decision support tools

## **Direct Connect**

Direct Connect enables you to seamlessly connect to and automatically populate or update your projects with our information, providing you with the most current Information in your specified area of interest. Information currently available via Direct Connect includes:

- Well and Production Data
- Directional Surveys
- Digital and Raster Well Logs
- Grid and Culture Data

## **Kingdom**

Kingdom is the most used interpretation solution in the world. It allows geoscientists to make more accurate decisions on where to drill for oil and gas. Kingdom has an uncompromised level of integration with additional Kingdom modules for geological capabilities, microseismic data, advanced attribute generation, AVO analysis, 3-dimensional interpretation workspace. Its scalable, multi-user database allows the entire asset team to work on the largest data sets and accomplish their work quickly and collaboratively.

## **GeoSyn**

Powerful, cost effective and easy-to-use, GeoSyn is a synthetic generation, cross-plotting, AVO analysis and 2D modeling package designed for geoscientists. Quickly move from information access and viewing, to analysis, to exporting synthetics and 2D models into Petra. GeoSyn enables you to test multiple scenarios to achieve the best results, and continues to incorporate important new functionality for geophysicists including cross-plotting and enhanced cross sections designed specifically for geologist.

## **AccuMap**

AccuMap provides desktop access to numerous up-to-date databases, including land, well, pressure, production, pipelines, core, reserves and logs for the Western Canadian Sedimentary Basin and Frontier areas, as well as Montana, North Dakota and Wyoming. Information from AccuMap can be exported directly into Petra to perform in-depth analysis of well-centric data. (Canada & U.S.)

## **Enerdeq Browser**

IHS Enerdeq Browser enables you to quickly access the information you need for any E&P specialty. In just a few minutes you can map, query, browse, and export the most current U.S. data. Petra features a direct link to Enerdeq Browser, enabling you to stream-line workflows, have the most current data required and make business decisions faster. (U.S.)

## **LOGarc**

LOGarc is a well information management system, powerful enough for your enterprise, yet easy enough for everyone in your organization to use. LOGarc offers a simplified workflow, meaning you can seamlessly integrate well log information with existing in-house mapping and analysis tools like Petra. Concurrent access to multiple disparate databases from any location with Internet access is another feature that makes LOGarc a flexible management system.

## **PowerTools**

PowerTools is a powerful, cost effective and easy-to-use analytical tool for evaluating reserves and economics. Evaluate lease and well production performance with decline curve analysis capabilities. PowerTools also includes multiple lease and well displays, and simultaneous display of multiple forecasts. Add volumetrics calculations and pressure analysis to your evaluation to enhance your reserves interpretation and provide more complete results. PowerTools is linked directly to Petra, meaning you can create or add projects directly from a Petra database into PowerTools and export multiple PowerTools results to zone table cases in Petra. (U.S.)

## **FieldDIRECT**

FieldDIRECT is a field-to-office service that captures daily field production information and stores it in a secure server for you and your team to analyze immediately, allowing you to gain insights into trends and identify and remedy production slowdowns. FieldDIRECT provides graphs, pivot tables, variance reports, monthly and daily allocated production reports at readings and pressures. FieldDIRECT has a direct connection to Petra, allowing geologists, engineers and business and operations manager to conduct historical trending, analyze ROI on workovers and perform reservoir analysis. (U.S.)

\*Canadian Data Only

[ihsmarkit.com](http://ihsmarkit.com)

## About IHS Markit

IHS Markit (Nasdaq: INFO) is a world leader in critical information, analytics and solutions for the major industries and markets that drive economies worldwide. The company delivers next-generation information, analytics and solutions to customers in business, finance and government, improving their operational efficiency and providing deep insights that lead to well-informed, confident decisions. IHS Markit has more than 50,000 key business and government customers, including 85 percent of the Fortune Global 500 and the world's leading financial institutions. Headquartered in London, IHS Markit is committed to sustainable, profitable growth.

### CUSTOMER CARE AMERICAS

**T** +1 800 447 2273  
+1 303 858 6187 (Outside US/Canada)

### CUSTOMER CARE EUROPE, MIDDLE EAST, AFRICA

**T** +44 1344 328 300

### CUSTOMER CARE ASIA PACIFIC

**T** +604 291 3600

**E** [CustomerCare@ihsmarkit.com](mailto:CustomerCare@ihsmarkit.com)